

IMPORTANT SAFETY AND INSTALLATION INSTRUCTIONS

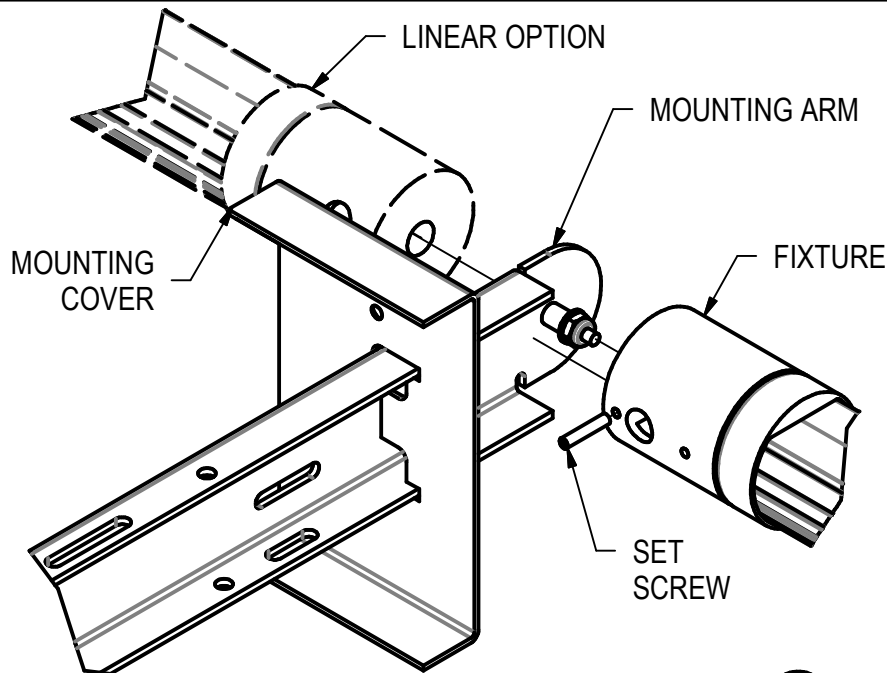
WARNING: Risk of fire and electrical shock. This product is to be installed by a qualified electrician only.

CAUTION: When using electrical equipment, basic safety precautions should always be followed including the following: Read all instructions carefully before installation and save

for future use. Make sure installation and all connections are in accordance with National Electrical Code and any local regulations. To avoid possible electrical shock, be sure that power supply is turned off before installing or servicing this fixture. Servicing should be performed by qualified service personnel.

These instructions do not claim to cover all details or variations. When additional information is desired, please contact your SPI representative.

LBK / LBI MOUNTING, STYK



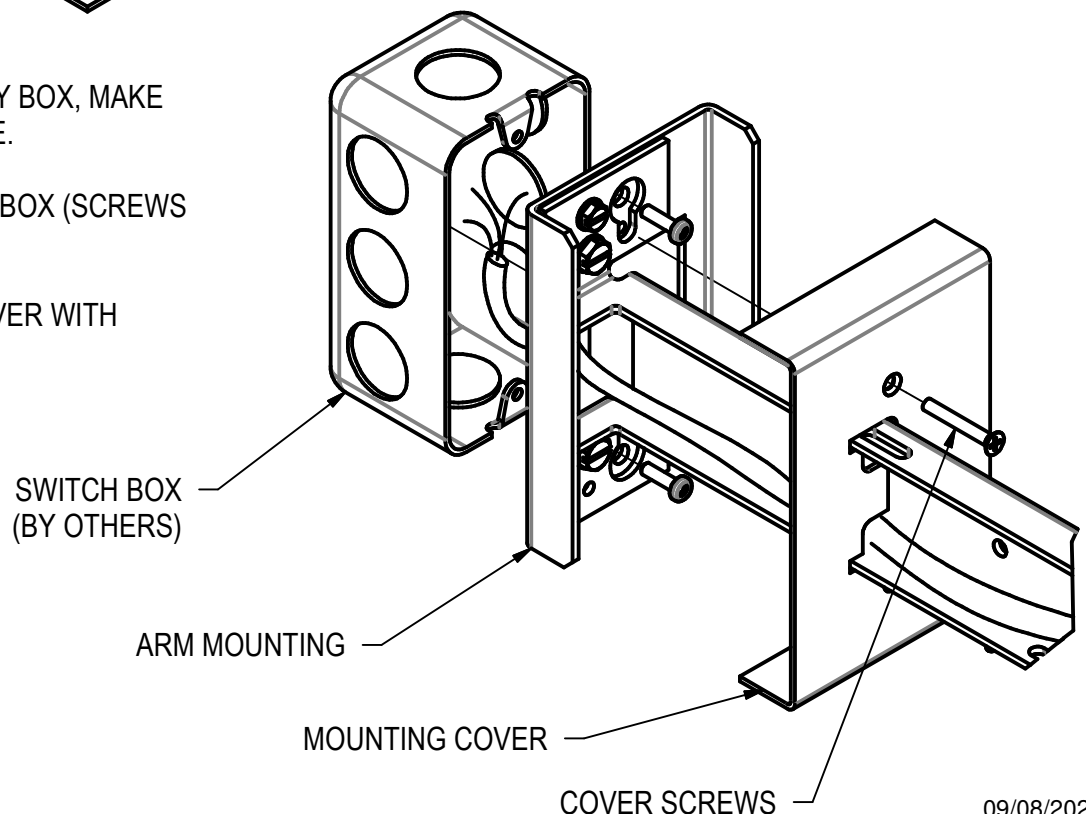
1. SLIDE MOUNTING COVER OVER MOUNTING ARM.

2. SLIDE FIXTURE OVER SCREW AND WASHER ON BRACKET. SECURE WITH SET SCREW, SUPPLIED.

3. FEED CORD INTO HANDY BOX, MAKE SPLICES PER LOCAL CODE.

4. MOUNT ARM TO HANDY BOX (SCREWS BY OTHERS).

5. ATTACH MOUNTING COVER WITH SCREWS PROVIDED.



09/08/2020
IS76219X